

U-Match R32 Ducted Heat Pumps

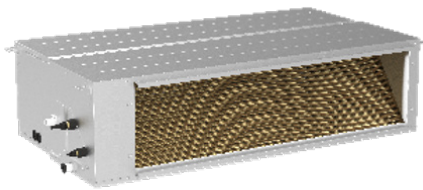


Find out more at www.greeac.co.nz

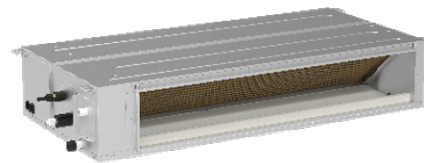


Gree U-Match R32 Ducted Heat Pumps

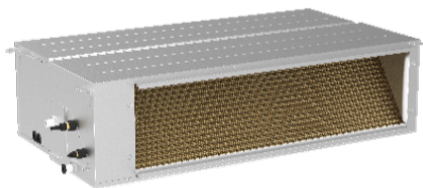
Gree's new range of U-Match R32 Ducted Heat Pumps incorporates Gree's latest climate control technology. New compressors, new coil designs, all DC components and dynamic fluid design for greater and quieter airflow. This means a more efficient heat pump, with less intrusion into your home.



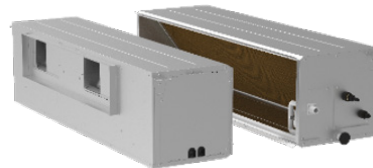
50 / 71



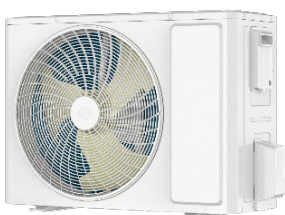
100



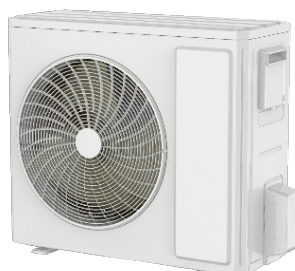
125 / 140 / 160



The Gree U-Match R32 ducted heat pumps come in 6 different models from 5.3 to 16kW, with adjustable air flows, there is a perfect model for your home.



50 / 71



100 / 125



140 / 160



Gree G10 Inverter Module

Each new U-Match is powered by Gree's G10 inverter module connected to a new, high efficiency DC inverter compressor. Gree have paid great attention to improving the efficiency and durability of their new range of compressors.



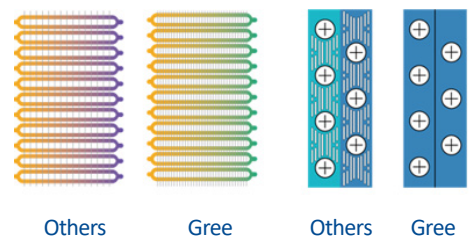
Energy Efficiency

All DC componentry improves energy efficiency, from the DC Inverter compressor with its step less capacity output, to brushless DC fan motors providing greater energy savings over older AC motors, to the DC electronic expansion valve offering precise control, each component contributes to better energy use.



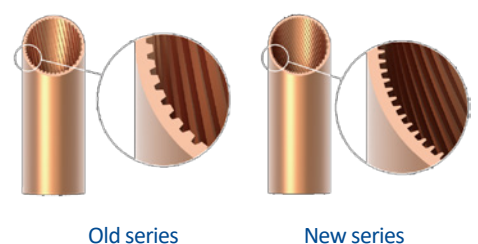
New Gree Climate Control Technology

Gree's new range of U-Match R32 Ducted Heat Pumps incorporates Gree's latest climate control technology. New compressors, new coil designs, all DC components and dynamic fluid design for greater and quieter airflow. This means a more efficient heat pump, with less intrusion into your home.



Improved Design

Each small step improves energy efficiency. From Improved rifling on the inner copper tubes to increase the internal heat transfer surface area, to low resistant refrigerant distribution within the coil, new coil fins with an optimised wind field design, Bionic fan blades with improved aerodynamic performance and a new "rain drop" grille for low wind resistance, all together these steps contribute to increased heat exchange efficiency and better use of your energy.

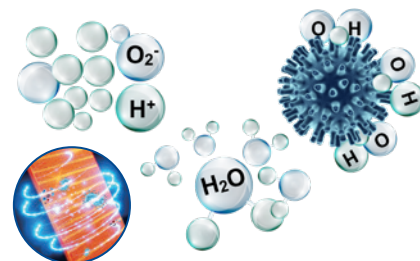


Enjoy Comfort with Your Family

Plasmacluster Ion Sterilisation & Fresh Air Intake Control

Everyone's focus has been on healthy, clean air in the last few years. Gree have responded to this with several new features to help keep your family safe.

Each indoor unit has an inlet for fresh air. This allows us to introduce via the indoor unit, fresh conditioned air while pushing out the stale air in the home. This air also passes by the Plasma Cluster Ion generator, this generator produces high energy ions and hydroxyl (OH) These ions and hydroxyls are absorbed on the surface of germs, and they extract hydrogen in the form of water, thus killing the germs. Each new U-Match ducted unit also comes with a self-rinsing feature to make sure the indoor coil is kept clean and free of bacteria and germs.



Intelligent Control

Superb comfort features, Gree U-Match R32 Ducted Heat Pumps have several features for greater user comfort.



Standard



Optional



Optional

Fast Cooling & Heating

Fast cooling and heating, the turbo mode will quickly heat or cool your home and once it gets to the correct temperature, will return automatically back to normal operation. All Gree units come with the I-Feel mode, this allows for the selection of where the temperature is detected, at the unit or at the wall controller. A humidity sensor is fitted as standard and works in cohesion with the temperature sensors to effectively control the effect of humidity on thermal comfort.

Features that Make Installation Easier

*Detachable Design**

Retrofitting ducted heat pumps can sometimes be awkward. Gree have solved this by making the indoor unit detachable. This allows the fan deck and the coil to be separated and installed into the ceiling through a 450mm square opening.

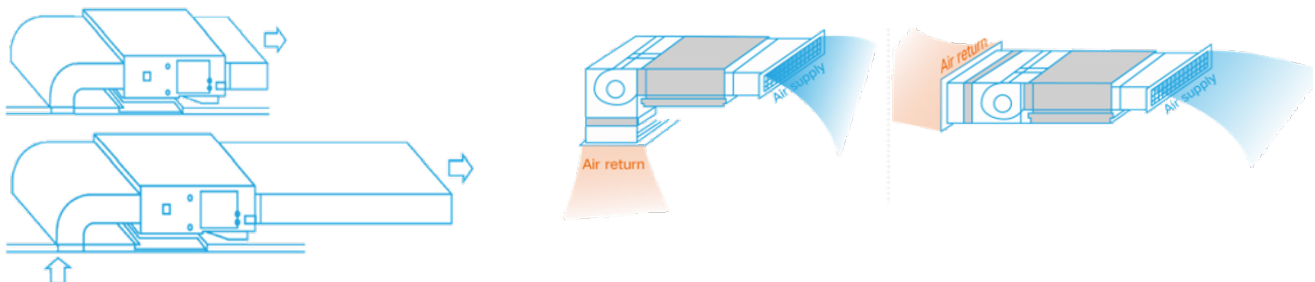


*Models 125 /140 / 160 only

Convenient Installation

Not every house is the same, when installing ducted units, it is important to balance the system and adjust the air flow to suit the duct design for the home. Gree units have 9 static pressure stages which allow for the fine tuning of the air movement.

The return air can be moved from behind the indoor unit to below, and drain pumps are included as standard, along with gravity drains if preferred.



Grilles Selection

Why Choose Gree U-Match Ducted?

Why choose Gree U-Match Ducted Heat Pumps?

At Gree New Zealand we offer a six-year warranty; our confidence in offering this warranty goes back to the sound engineering that goes into the development of all Gree products.

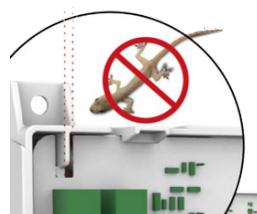
The new Gree U-match range comes with refrigerant cooling of the outdoor PCB to prevent overheating and a fire, rodent proof electrical box. The outdoor PCB is coated with three layers of Aus Guard to prevent corrosion. There is a full suite of safety features as standard with self-diagnosis to make servicing easier. The outdoor chassis is made of zinc coated and painted mild steel. The coils fin stock is protected by a hydrophilic coating. The unit will operate under a wide voltage and temperature range and has auto restart and a closed loop start-up program.



Before Coating



After Coating



Gap < 3mm
Insect-proof Design

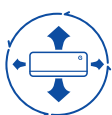
Features



Wifi Control



8°C Heating



3D Airflow



Lock



7 Fan Speeds



I Feel



Eco Mode



Three Sleep Modes



Clock Display



3DC Inverter



X-fan



Timer



Turbo Button



Self-Diagnosis



Soft Start



LED Display

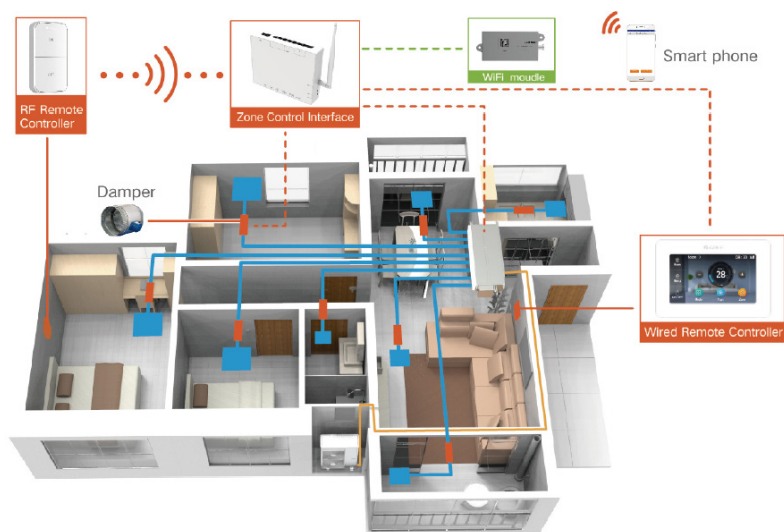
Technical Specification

Type		U-Match Ducted					
Range		U-Match	U-Match	U-Match	U-Match	U-Match	U-Match
RE Part #		AC5750/AC5740	AC5751/AC5741	AC5752/AC5742	AC5753/AC5743	AC5754/AC5744	AC5755/AC5745
Model		GUD50PHS1/C-S	GUD71PHS1/C-S	GUD100PHS1/C-S	GUD125PHS1/C-S	GUD140PHS1/C-S	GUD160PHS1/C-S
		GUD50W1/NhC-S	GUD71W1/NhC-S	GUD100W1/NhC-S	GUD125W1/NhC-S	GUD140W1/NhC-S	GUD160W1/NhC-S
GEMS Reg #		AAC7723	AAC7651	AAC7699	AAC7597	AAC7632	AAC7639
Performance							
Cooling Capacity (Range)	kW	5.3 (2.4~6.0)	7.1 (2.46~7.8)	10.0 (3.0~11.7)	12.5 (3.6~14.0)	14.0 (4.2~16.0)	16.0 (4.3~18.0)
Heating Capacity (Range)	kW	5.8 (2.2~7.0)	8.0 (2.2~8.8)	12.0 (3.6~13.5)	14.0 (4.2~15)	16.0(4.8~17.0)	18.0 (5.4~20.0)
Cooling Power Input	kW	1.25	1.97	2.7	3.68	3.92	4.80
Heating Power Input	kW	1.25	2.00	3	3.68	4.2	4.65
Cooling AEER	W/W	4.31	3.69	3.64	3.35	3.49	3.37
Heating ACOP	W/W	4.56	3.98	3.9	3.72	3.83	3.8
Heating Capacity H2	kW	5.72	5.98	9.9	10.39	13.05	14.56
Power Input Heating H2	kW	1.97	1.98	3.05	3.56	4.12	4.69
SERL Star Label	Cool	4/3.5/3.5	3.5/3.5/3.5	4/3.5/4	4/3.5/4	3.5/3/3	3.5/3.0/3.5
Hot/Ave/Cold	Heat	3.5/3/2.5	3.5/2.5/2	3/2.5/2	3/2.5/2	3.5/2.5/2	3.5/2.5/2
Dehumidifying Volume	L/Hr	1.7	2.4	3	3.5	4	4.5
Air Flow Volume (Max)	L/Sec	333	417	583	778	889	972
ESP, Factory set	Pa	25	25	37	50	50	50
ESP, Range	Pa	0 ~ 160	0 ~ 160	0 ~ 160	0 ~ 200	0 ~ 200	0 ~ 200
Sound Pressure (Min/Max) Ind	dB(A)	35 ~ 41	46 ~ 44	40 ~ 42	39 ~ 42	41 ~ 45	46 ~ 50
Sound Pressure / Power Out	dB(A)	57 / 67	57 / 68	58 / 72	59 / 73	59 / 72	60 / 73
Electrical							
Power Supply	V-Hz-Ph	220~240/50/1					
Recommended Circuit Breaker	A	16	20	32	32	40	40
Nominal Current (Cool / Heat)	A	5.7 / 5.7	9.0 / 9.1	12.3 / 13.7	16.9 / 16.9	18 / 19.3	22 / 21.3
Control Wiring		3 Core + Earth					
Dimensions and Weights							
Indoor Dimensions (WxHxD)	mm	900 x 260 x 655	900 x 260 x 655	1340 x 260 x 655	1350 x 360 x 720	1350 x 360 x 720	1350 x 360 x 720
Indoor Net Weight	kg	30	30	43	57	60	60
Outdoor Dimensions (WxHxD)	mm	889 x 660 x 340	889 x 660 x 340	940 x 820 x 370	940 x 820 x 370	900 x 1260 x 340	900 x 1260 x 340
Outdoor Net Weight	kg	42	42	67	67	90.0	97
Installation							
Operating Temp Range Cool	°C	-15 ~ 52	-15 ~ 52	-15 ~ 52	-15 ~ 52	-15° ~ 52°	-15 ~ 52
Operating Temp Range Heat	°C	-15 ~ 24	-15 ~ 24	-15 ~ 24	-15 ~ 24	-15° ~ 24°	-15 ~ 24
Refrigerant Type		R32	R32	R32	R32	R32	R32
Refrigerant Charge	kg	1.4	1.4	2.2	2.4	2.8	3.3
Max Pipe Length (pre-charged)	M	30(15)	30(15)	75 (15)	75 (15)	75 (15)	75 (15)
Max height		20	20	30	30	30	30
Additional Refrigerant	g/m	16	16	25	25	25	35
Pipe Connection		3/8" ~ 5/8"	3/8" ~ 5/8"	3/8" ~ 5/8"	3/8" ~ 5/8"	3/8" ~ 5/8"	3/8" ~ 5/8"
Plenum Sizes	Supply	215 x 740	215 x 740	215 x 1153	190 x 850	190 x 850	190 x 850
	Rtn	235 x 871	234 x 871	220 x 1188	326 x 1170	326 x 1170	326 x 1170

Control Options

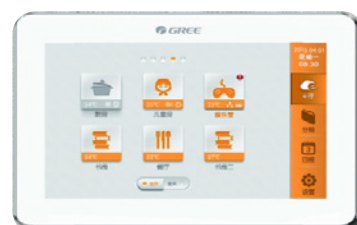
Gree Zone Control (Optional)

Duct type units with zone controllers can provide independent temperature control for up to 8 zones / rooms. Each room has individual control and can be closed off when not in use. This means that the Gree zone controller can provide energy savings and greater comfort and temperature stability.



Central Controller

Gree offer a range of controllers including a Central Controller to manage several units at once.



Gate Card Function LE60-24/H1 (Optional)

Connectable to the access control system: pull the key card to turn off the indoor unit and reinsert to resume operation.



Dry Contact Gateway (ME30-42/E1)

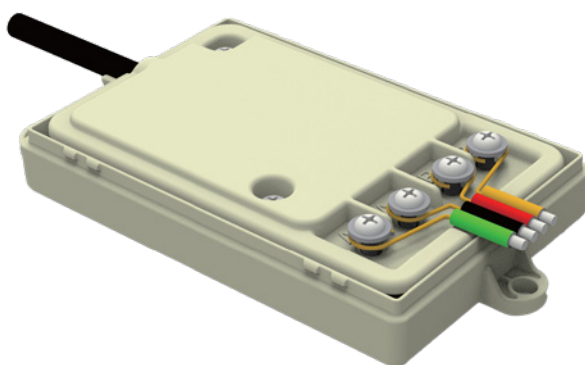
The dry contact controller (optional) provides signal output contacts for fire alarms, remote on/off. Operating status, running mode and error indicating.



Control Options, Duct Kits

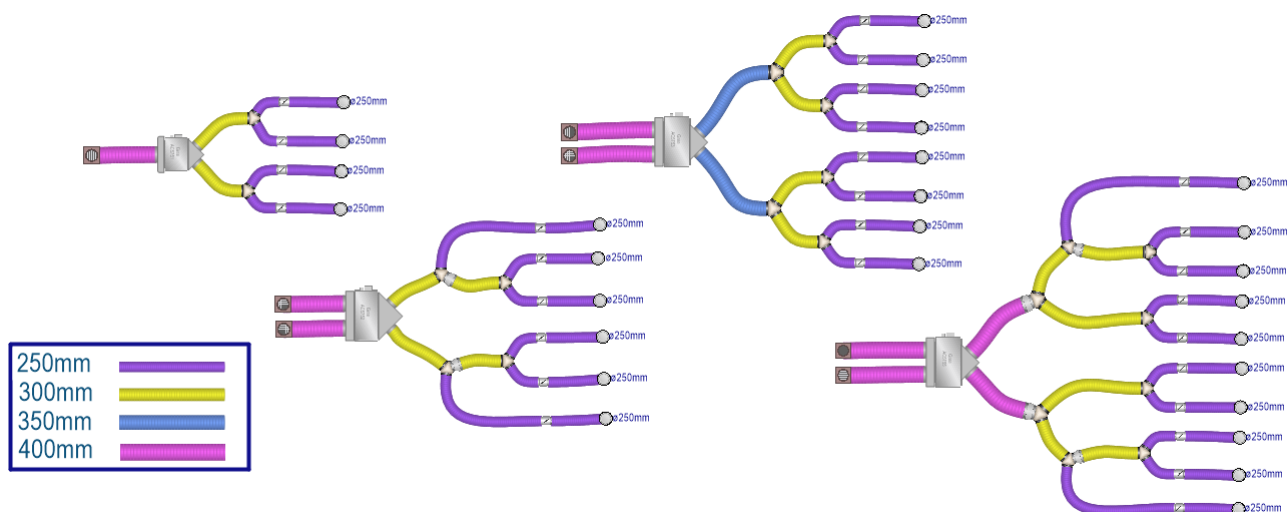
Modbus Gateway Kit - ME50-00/EG(M)

Allows for easy Modbus integration with central BMS networks for monitoring and control also make third party zone control systems integration possible.



Gree Universal Duct Kits

The Gree duct kits are a pre-engineered kit featuring light weight plenums, diffusers, Y branches, return grilles, tape and insulated ducting to suit the full range of Gree Ducted air conditioners.



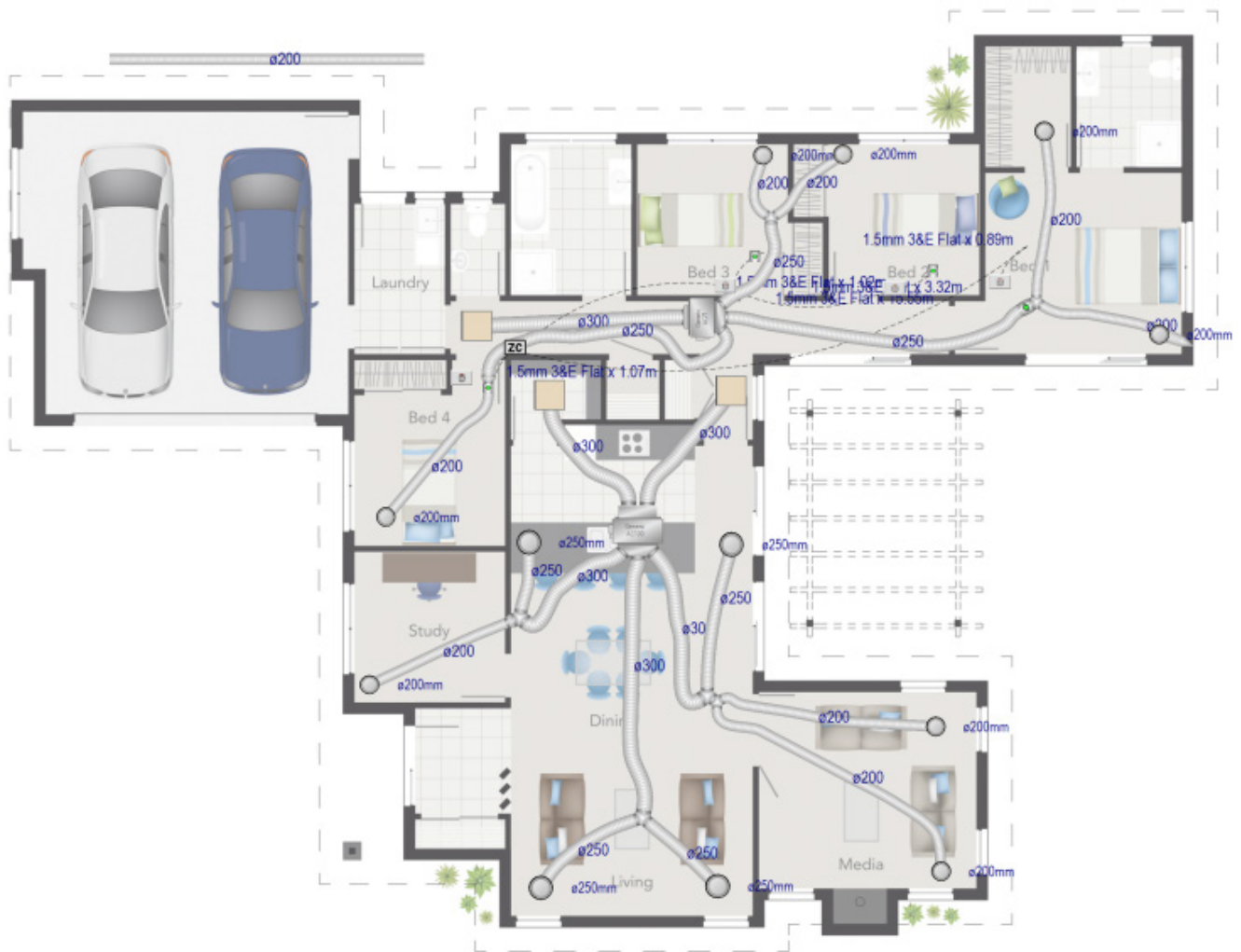
The duct kits come in four sizes

Model	Description	Number of outlets	Suitable for;
AC0346	4 zone duct kit	4	GUD50 / GUD71
AC0347	6 zone duct kit	6	GUD100
AC0348	8 zone duct kit	8	GUD125 / GUD140
AC0349	10 zone duct kit	10	GUD160

Duct Design Service

Duct Design Service

Universal duct kits may not fit every situation, so Gree offer a free duct design service for residential and light commercial projects. This service is offered through the Gree Dealer network.





Notes

[illegible]

About Gree

"One in three is Gree", one third of all air conditioners/heat pumps manufactured worldwide are made by Gree Electric Appliances of Zhuhai, China. The business was founded in 1991, from a small factory in Zhuhai, China. By 2023 sales revenue had reached \$44 billion (NZD) worldwide, with products sold in 160 countries and over 400 million users, making Gree Electric one of the largest air conditioning enterprises in the world.

The Gree range has been distributed in New Zealand for over 20 years and we have over 140 dealers and resellers nationwide, with eleven distribution centres throughout the country.

Gree products come with a comprehensive 6 years parts and labour warranty. As the New Zealand distributor for Gree products we hold a full range of spare parts locally for all models we distribute and have a skilled technical team at the ready to provide assistance with design, service and after sales support.



For Installation and Sales:

For Parts and Warranty:

 **GREE**
Smart air for smarter living

www.greeac.co.nz

0800 BUY GREE
0800 289 4733